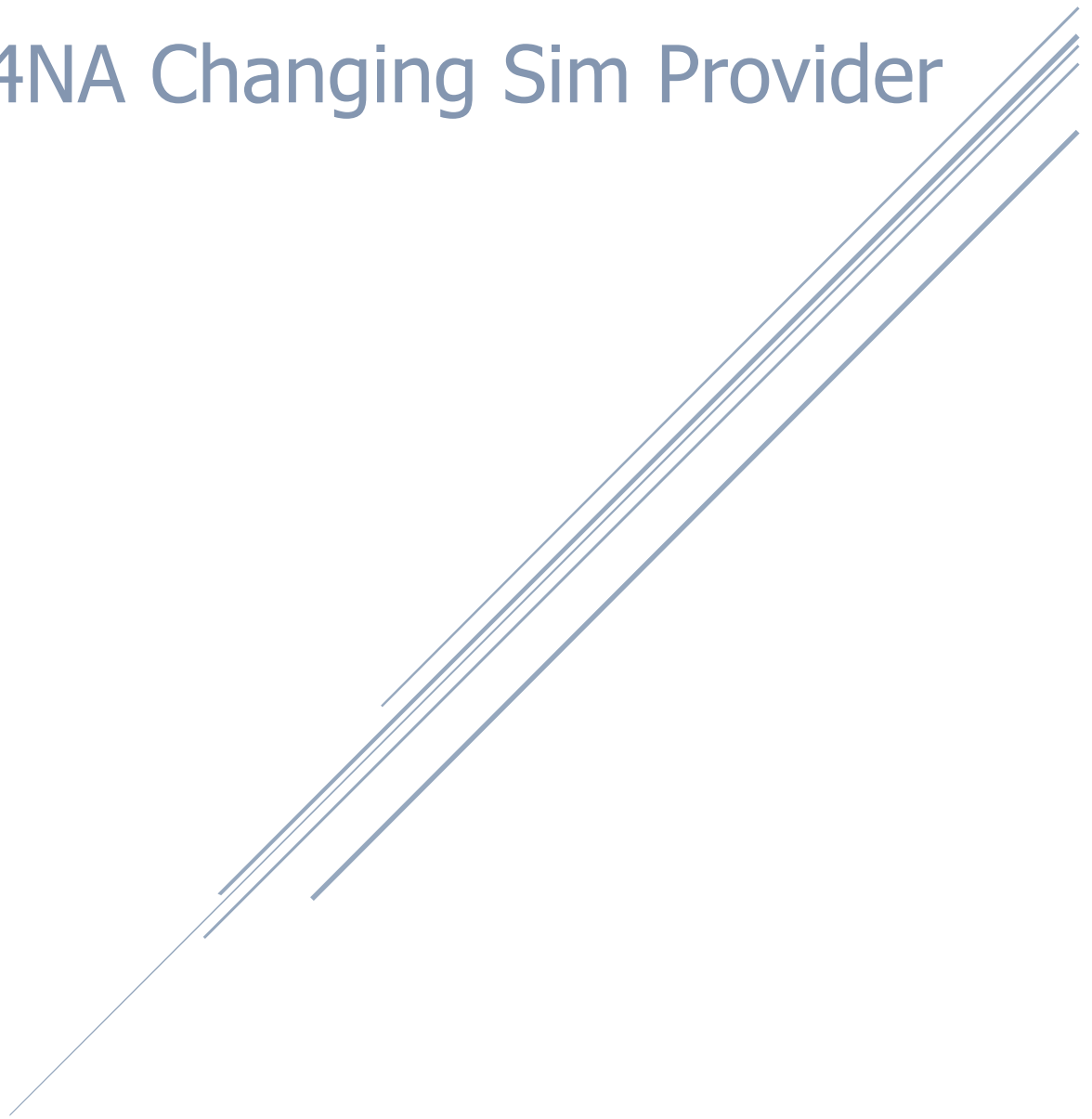



CM4NA Changing Sim Provider



CM4NA Changing SIM Card Provider

1. Download the Telit AT Controller Utility from ConnectedIO Support Page at www.connectedio.com/support
2. Scroll down to the EM LTE Modem Family and click on the Drivers drop down and scroll to Window AT Command Center

EM LTE Modem Family




- User Guide
- Data sheets
- Faq's
- Drivers

[Product Page >>](#)

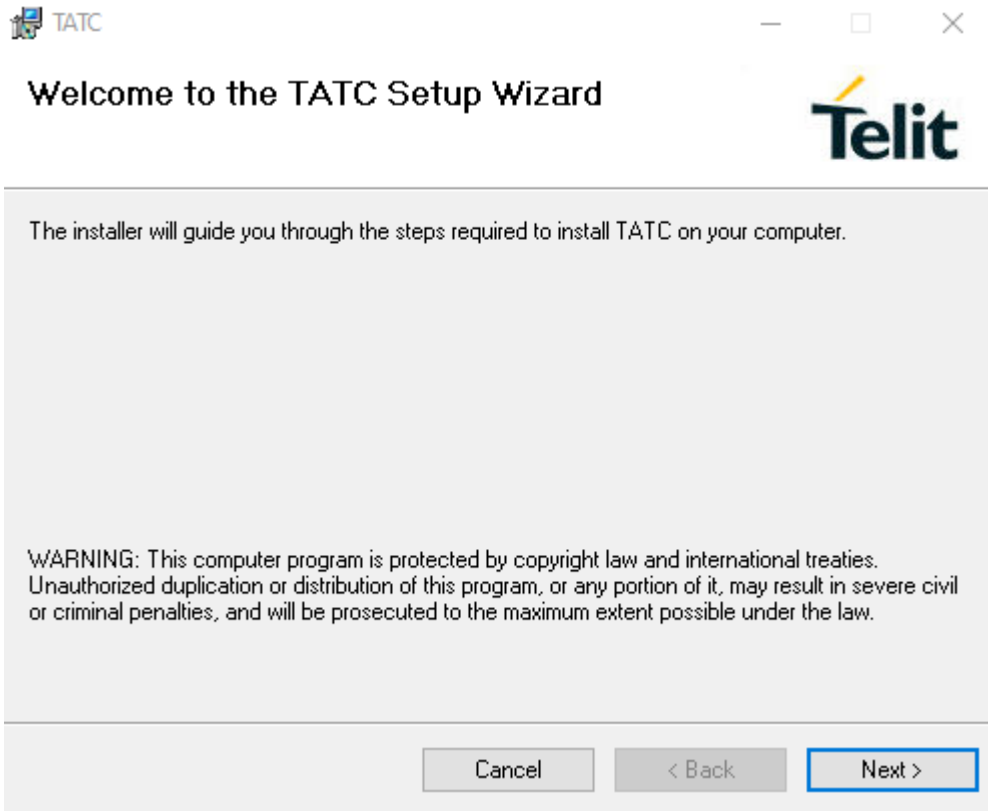
What do you want to do with Setup_TATC_3.3.2_XFP_3.2.6.msi (9.3 MB)?
From: connectedio.s3.us-west-1.amazonaws.com

Run Save ^ Cancel ×

3. Click on Run
4. Click on the installer package.

<input type="checkbox"/> Name	Type	Compressed size	Password ...	Size
 WindowsDesktopDriversInstaller_UF.00.06_1.05.0003	File folder			

5. Click on Next at the Welcome to the TATC Setup Screen



6. Click on I Agree and then Click Next



License Agreement



Please take a moment to read the license agreement now. If you accept the terms below, click "I Agree", then "Next". Otherwise click "Cancel".

End User License Agreement

IMPORTANT: THIS SOFTWARE END USER LICENSE AGREEMENT (EULA) IS A LEGAL AGREEMENT BETWEEN YOU (EITHER AN INDIVIDUAL OR, IF PURCHASED OR OTHERWISE ACQUIRED BY OR FOR AN ENTITY, AN ENTITY) AND TELIT. READ IT CAREFULLY BEFORE COMPLETING THE INSTALLATION PROCESS AND USING THE SOFTWARE. IT PROVIDES A LICENSE TO USE THE SOFTWARE AND CONTAINS WARRANTY INFORMATION AND LIABILITY DISCLAIMERS. BY SELECTING THE DOWNLOAD OR INSTALL NOW BUTTON AND USING THE SOFTWARE, YOU ARE CONFIRMING YOUR ACCEPTANCE OF THE SOFTWARE AND AGREEING TO

I Do Not Agree

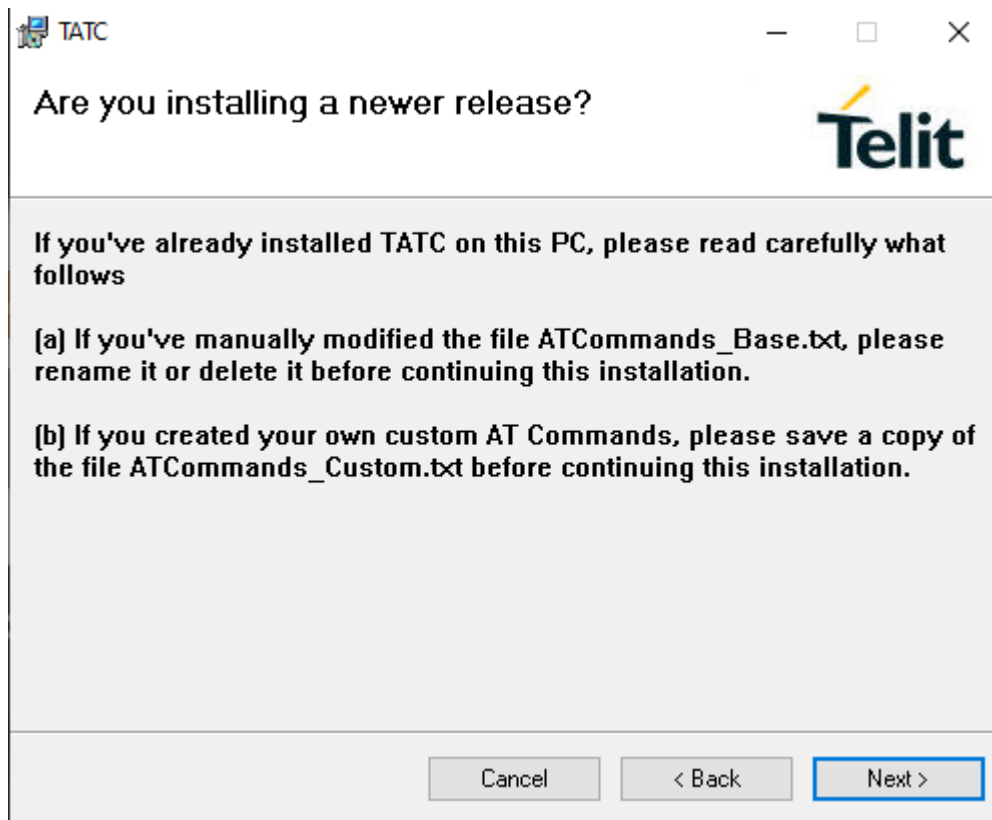
I Agree

Cancel

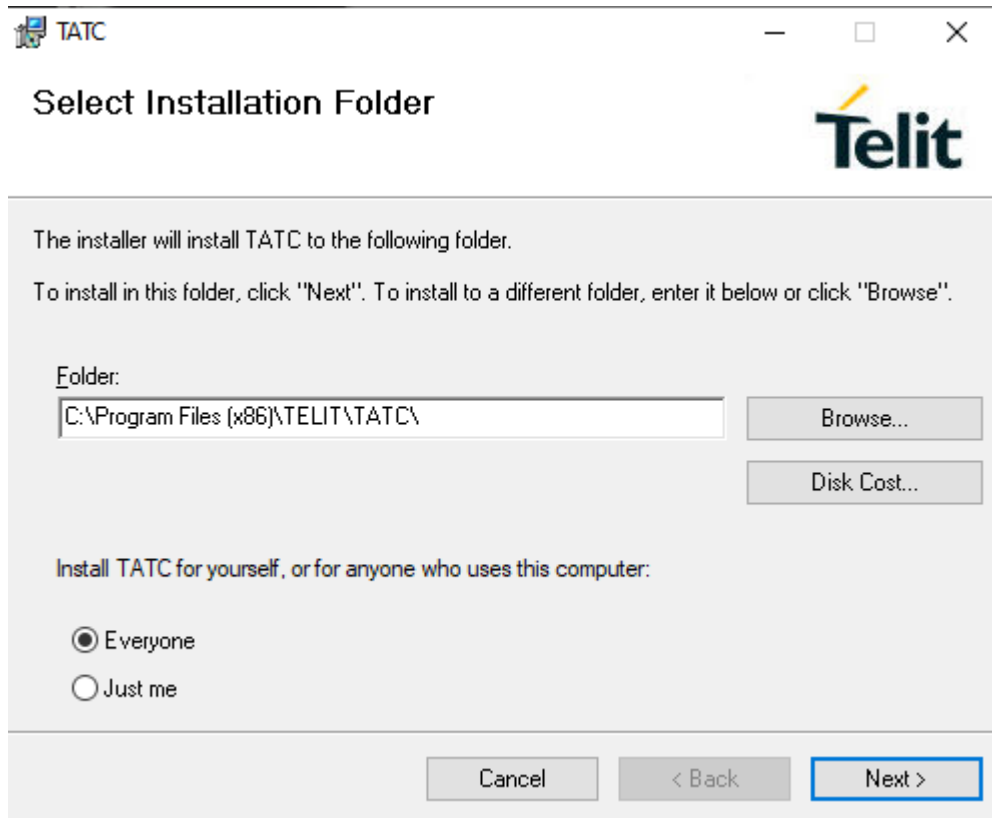
< Back

Next >

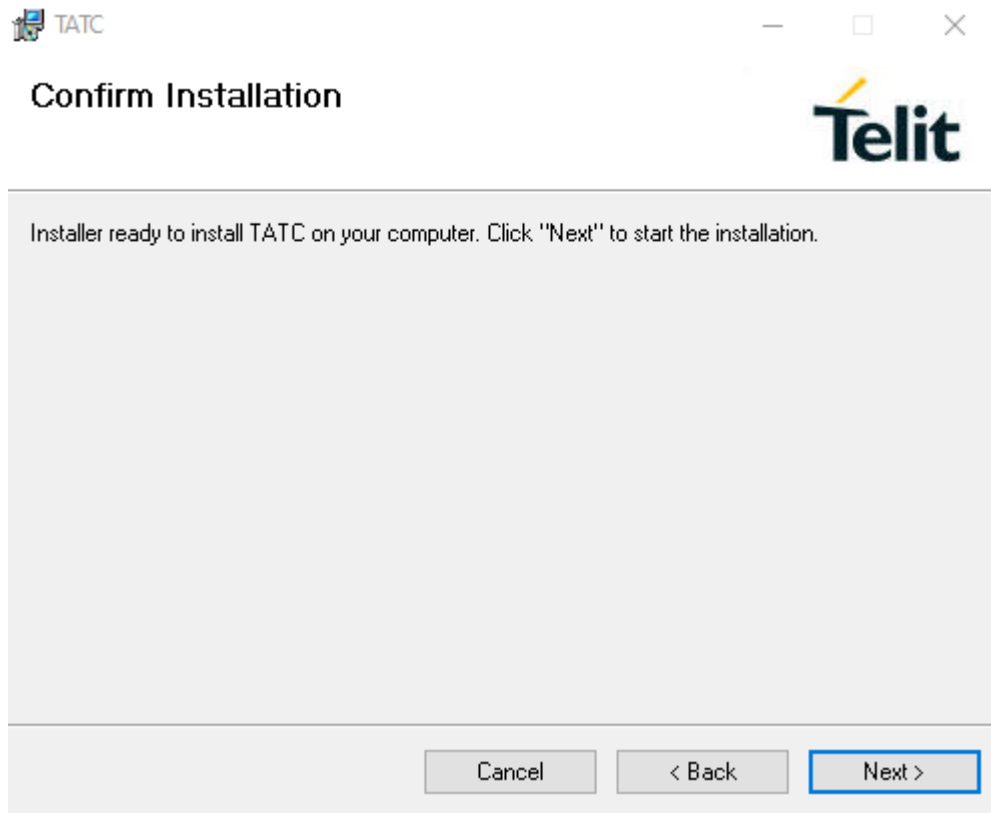
7. Click Next



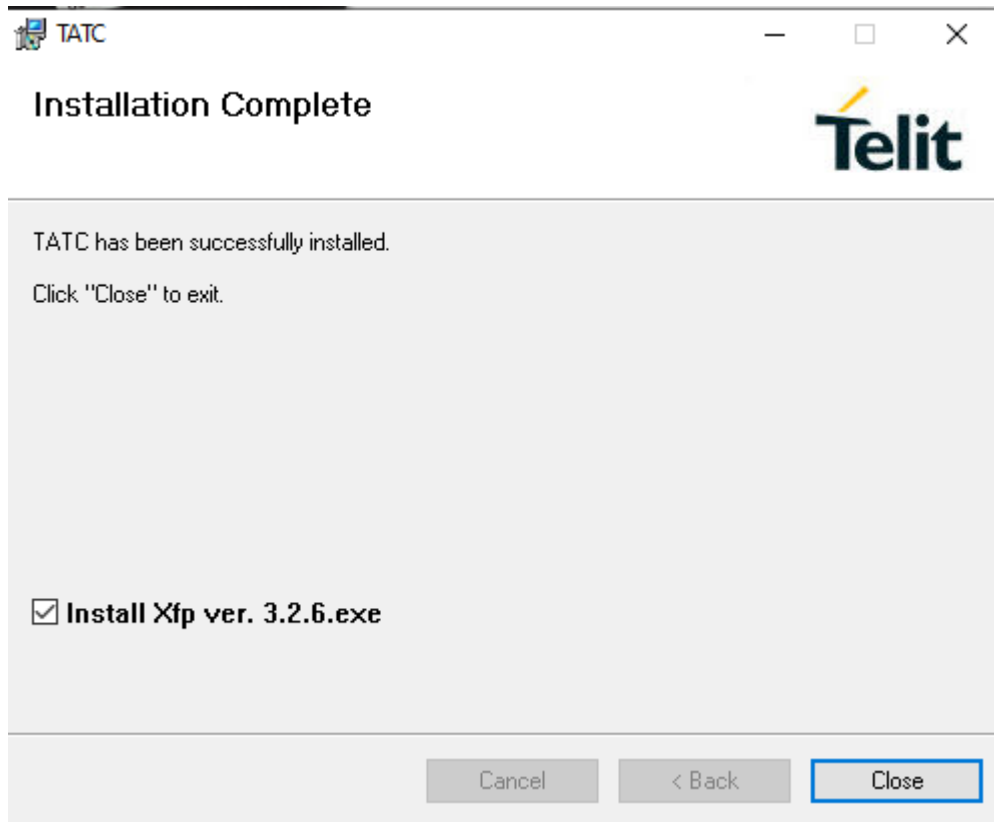
8. Click Next



9. Click Next

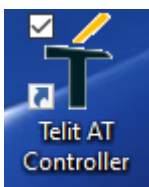


10. Un-Check the Install Xfp ver3.2.6.exe and Click Close



11. Using the V cable that came with the modem plug the mini and micro USB connections into the modem and then plug the other end into the V cable into the PC.

12. Click on The Telit AT Controller on the Desktop



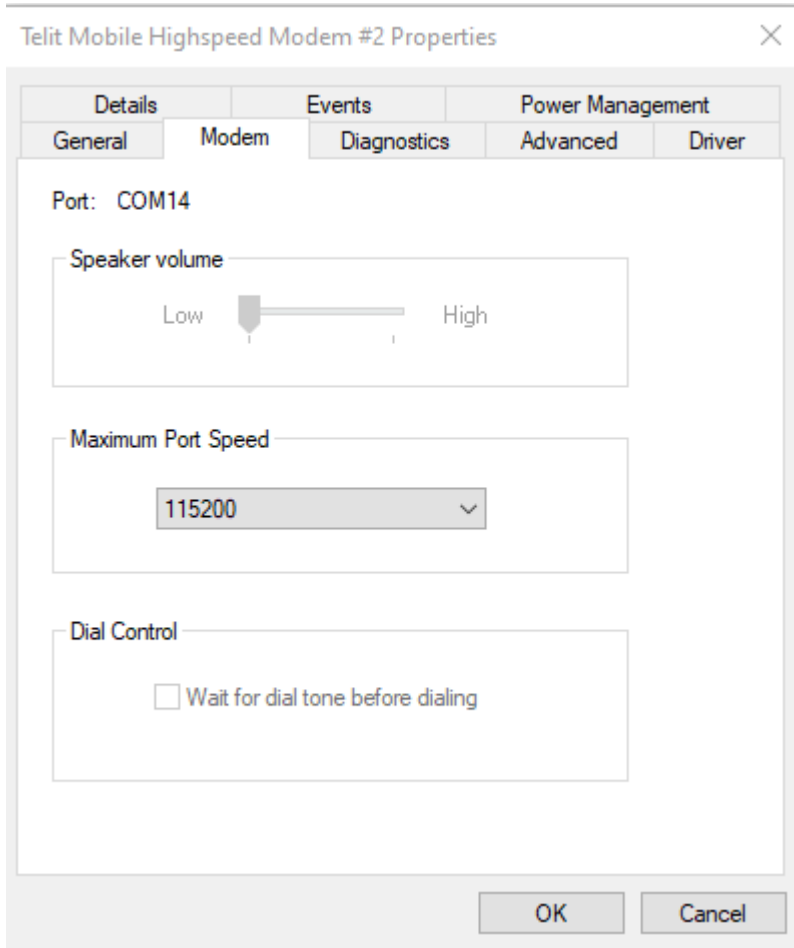
It will come to a screen that looks like this.



13. Click on the Wrench and Clipboard Icon



14. Make sure that the com port matches the properties found in the Device Manager of the computer for the Telit Modem
15. To find the com port properties are go to Control Panel > Device Manager > Locate the Modem section and click the drop down. Right click on the Telit Mobile Highspeed Modem and click Properties. Click on the Modem tab to find the com port that it is connected to.

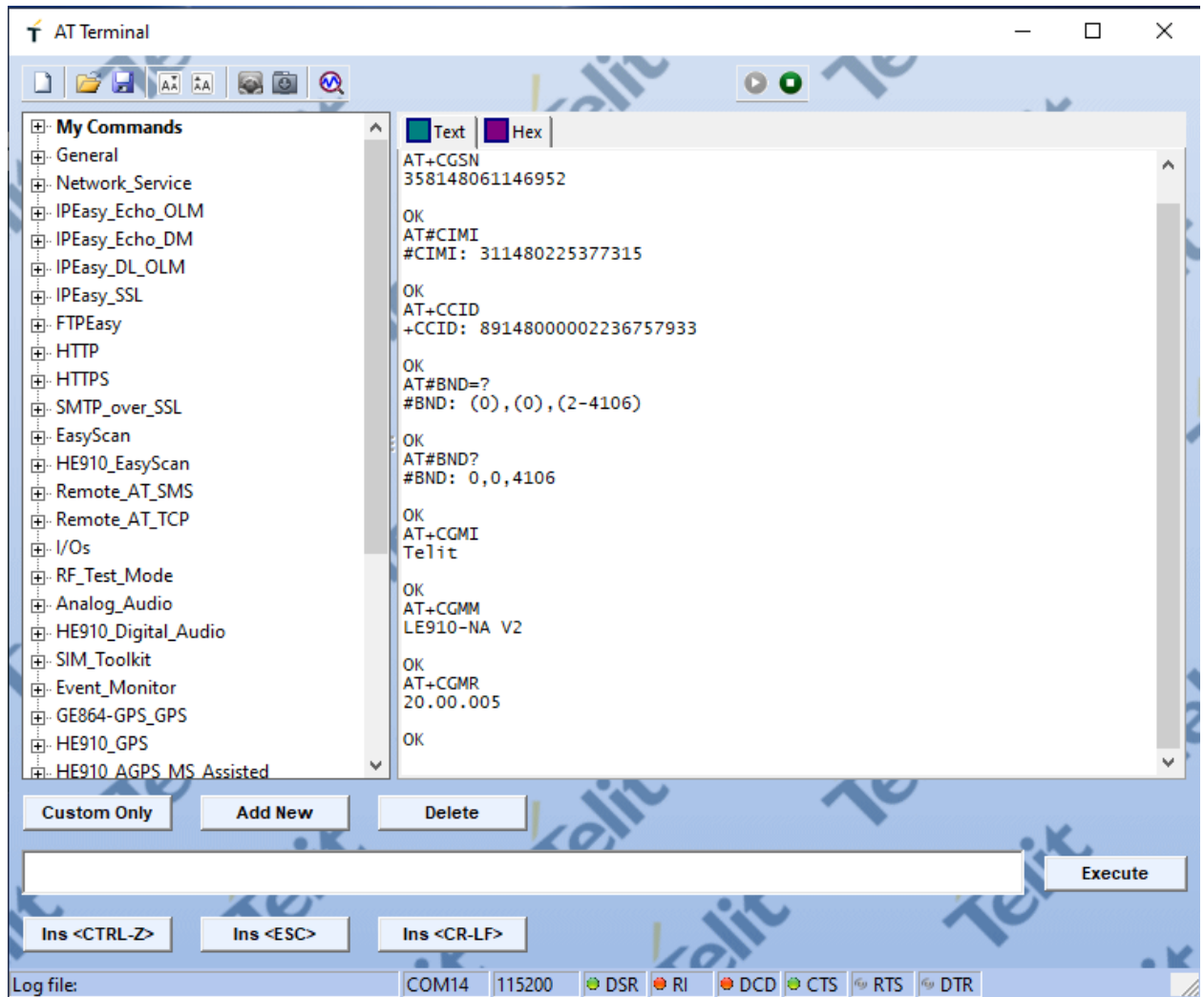


16. To verify that the software and the modem are communicating press the play button on the main screen.



17. If they the connection is correct the IMEI, Manufacturer, Model and FwRelease will populate with the settings from the modem.

18. Click on the gear icon in the lower fight hand corner of the Telit AT Controller.



19. By default, the modem will come configured for an ATT/T-Mobile sim card. To change to a Verizon card, click on the white box and type this command:

`AT#FWSWITCH=1,1`

20. Click Execute and the modem will say “ok” after running the command.

21. To set the CM4NA to ATT type the following command in the white box:

`AT#FWSWITCH=0,1`

22. Click Execute and the modem will say “ok” after running the command.

23. Process is complete.